



ARCHERY WINDOW

Installation Instructions

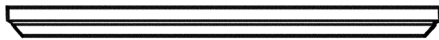
Silent Shadow Window System

Tools Needed: Cordless Drill • Square Drive Bit • Tape Measure • Saw • Staple Gun

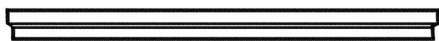


Screws & hardware included for one window systems:

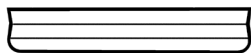
- [16] #8 x 1" Washer Head Screws
Use 3 screws per interior glass hinge.
- [50] #8 x 3/4" Pan Head Screws
Use 5-6 screws per exterior track.
Use 5 screws per drip cap, evenly spaced.
- [8] Rubber Stop Screws
Use 1 screw under each track.
(interior & exterior)
- [2] Interior Hinged Glass Panel
- [2] Window Shield with Draw Cord
- [2] Drip Cap
- [4] Exterior Shield Tracks
- [4] Exterior Shield Tracks Extensions
- [2] Speed Cinch®
- [6] Window Latches



Exterior Shield Track



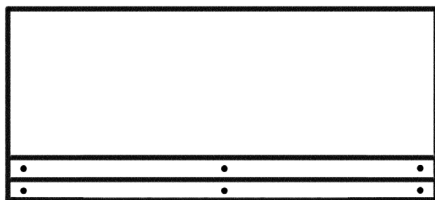
Exterior Shield Track Extensions



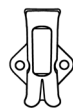
Exterior Drip Cap



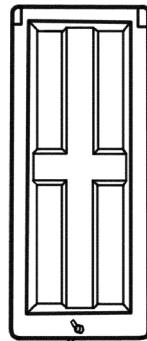
Window Latch



Interior Hinged Glass Panel



Speed Cinch®

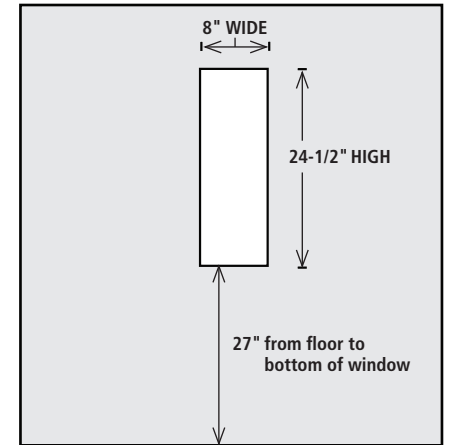


Exterior Window Shield with Draw Cord

STEP 1. PREPARING YOUR BLIND

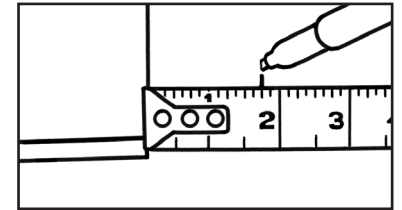
Mark the intended position of your window using the measurements indicated here.

Cut the window frame.



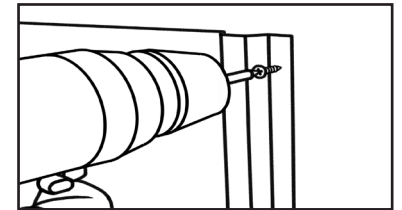
STEP 2. INSTALL THE EXTERIOR SHIELD TRACKS

2A - On each of the 24-1/2" sides, measure over 1-3/4" at the top and bottom corners. Be sure to mark all four spots.



2B - Using the marks as a guide, position the first exterior shield track along one side of the window opening. Raise the channel about 1/8" above the top of the window. Use 1 pan head screw to hold the exterior track in place.

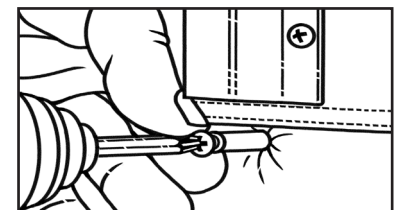
Repeat step 2B on the opposite side.



2C - Using 2 pan head screws, install the top half of the shield track (the short piece). Then, install the bottom half of the shield track, with about 1" of the bottom track overlapping the top track. The total length of the combined shield tracks is 46-1/4". Secure each combined track with a total of five pan head screws.



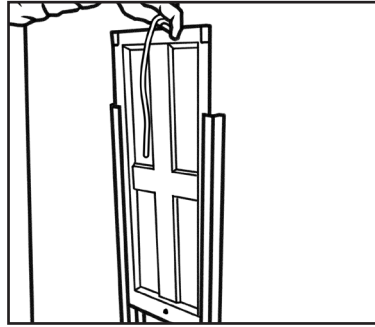
2D - Install the rubber stop screws just under each shield track. Check to make sure the shield is level once both stop screws are in place.



(Archery window instructions continue on the other side)

STEP 3. INSTALL THE EXTERIOR SHIELD

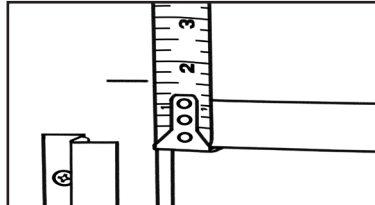
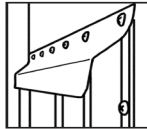
Drop the exterior shield into place behind the exterior shield tracks. The cord hole should be on the bottom of the shield.



STEP 4. INSTALL THE EXTERIOR DRIP CAP

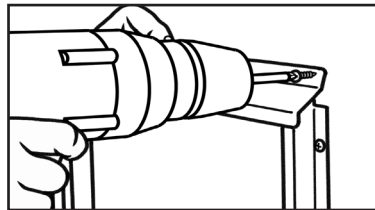
4A - It is critical to place the Drip Cap on top of the Shield Track as seen in the image.

Begin by making guide marks 1-9/16" above the window.



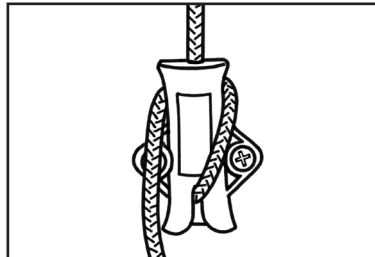
4B - Secure the drip cap on the right side with 1 pan head screw. Then, make sure the drip cap is level and rests on the marks. If so, secure with another pan head screw.

Use 5 evenly spaced pan head screws to finish securing the Drip Cap.



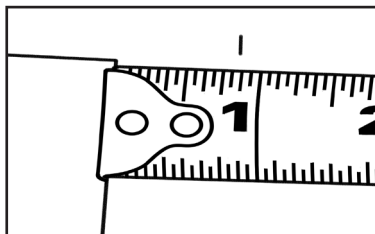
STEP 5. INSTALL THE DRAW CORD LOCK

Pull the shield up and down a few times to center the cord in the window. Once you've found the center, let the shield down. Then measure 14" down from the center and mark the position. Position the Speed Cinch® over the mark, and place the tube in a vertical position. The notch should be at the bottom. Secure the Speed Cinch® with two #8 x 1" screws. Run cord through the tube.

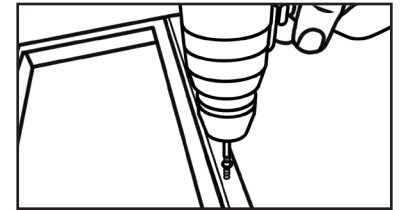


STEP 7. INSTALL THE INTERIOR GLASS AND FASTENERS

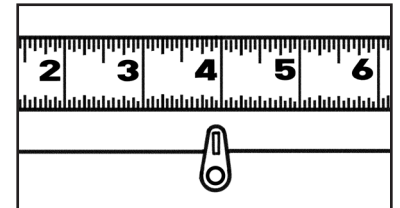
7A - Hold the glass and hinge over the window opening. Measure about 7/8" from the top of the window cutout and make a mark. Then measure about 7/8" from the left side of the window cutout, making marks at both the top and bottom.



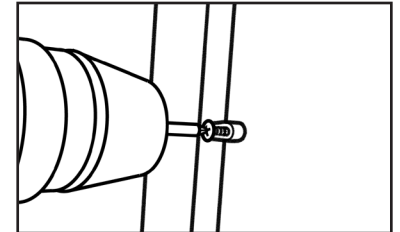
7B - Line up your glass window and place 3 washer head screws in the metal hinge.



7C - Place 2 window latches on the right side of the window. Measure 4" down from the top of the glass and 4" up from the bottom of the glass.



7D - Use washer head screws to secure window latches.



Archery Window - Silent Shadow Window System

SUMMIT OUTDOORS, LLC

7201 Engle Rd., Fort Wayne, IN 46804 • Toll Free: 1-888-446-4868 Fax: 260-483-2070

www.shadowhunterblinds.com